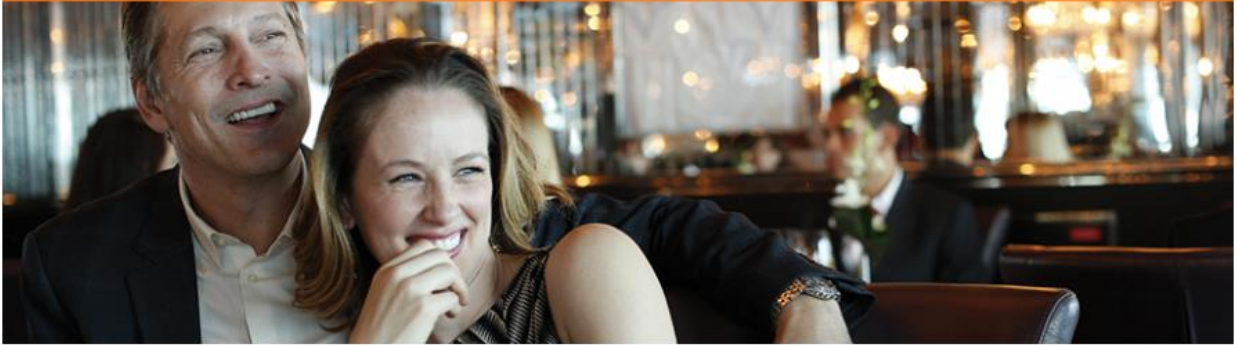


## HOLLAND AMERICA



**Receive the Services of a Distinctive Voyages Host, an Invitation to a Private Cocktail Reception and an Exclusive Shore Event on these Distinctive Voyages sailings.**

### UNPARALLELED OPTIONS

Holland America Line itineraries span the globe with more than 400 ports of call, a number unequalled among other premium cruise lines. Their key partnerships with BBC Earth Experiences, Destination Guides (AFAR) and America's Test Kitchen, to name a few, gives their guests options that are unparalleled to what others can offer.

#### **10-Day Southern Caribbean Seafarer**

*ms Koningsdam*

October 29, 2017

Fort Lauderdale, Florida, US; Amber Cove, Dominican Republic; San Juan, Puerto Rico; Kralendijk, Bonaire; Willemstad, Curacao; Oranjestad, Aruba; Fort Lauderdale, Florida

*Ocean-view fares from \$1,329*

Taxes, fees, port expenses of \$141 per person are additional

#### **16-Day Journey to the New World**

*ms Prinsendam*

November 2, 2017

Civitavecchia (Rome), Italy; Cartagena, Spain; Malaga, Spain; Cadiz (Seville), Spain; Lisbon, Portugal; Funchal (Madeira), Portugal; Half Moon Cay, Bahamas; Fort Lauderdale, Florida, US

*Ocean-view fares from \$1,899*

Taxes, fees, port expenses of \$168 per person are additional

**Exclusive Shore Event:** Action Packed Seville

#### **16-Day Panama Canal**

*ms Westerdam*

November 8, 2017

Fort Lauderdale, Florida, US; Oranjestad, Aruba; Enter Panama Canal Cristobal, Exit Panama Canal Balboa; Puerto Caldera (Puntarenas), Costa Rica; Corinto, Nicaragua; Puerto Quetzal, Guatemala; Puerto Chiapas, Mexico; Huatulco, Mexico; Puerto Vallarta, Mexico; San Diego, California, US

*Ocean-view fares from \$2,229*

Taxes, fees, port expenses of \$380 per person are additional

### **14-Day Western & Eastern Caribbean Collector Holiday**

*ms Nieuw Amsterdam*

December 23, 2017

Fort Lauderdale, Florida, US; Half Moon Cay, Bahamas; Georgetown, Cayman Islands; Cozumel, Mexico; Fort Lauderdale, Florida, US; Grand Turk, Turks and Caicos; San Juan, Puerto Rico; Philipsburg, Saint Maarten; Half Moon Cay, Bahamas; Fort Lauderdale, Florida, US

*Ocean-view fares from \$2,909*

Taxes, fees, port expenses of \$275 per person are additional

Terms: Fares are based on Promo LG. Featured fares are per person based on double occupancy, cruise or Land+Sea Journeys only. Fares are in U.S. dollars. All savings amounts are included in the fares shown. Taxes, Fees & Port Expenses are additional and range from \$141 to 380. Subject to availability. For more information about our stateroom categories and suite descriptions, to view deck plans and for full terms and conditions applicable to your cruise, please refer to your travel agent or the appropriate Holland America Line brochure. Offers have limited space, and may be modified or withdrawn without prior notice. Other restrictions may apply. Ships' Registry: The Netherlands. Distinctive Voyages: Sailing dates and amenities, including exclusive shore events, are current at time of printing and are subject to change without notice. Amenities apply to 1st and 2nd passenger only. Offers are subject to availability, at time of booking, and may be altered or withdrawn at any time without notice. Booking procedure is current at time of print. Pricing will be confirmed at time of booking. Cancellations, refunds, and penalties are imposed by the individual cruise line. Distinctive Voyages amenities may be substituted if a minimum number of guests are not confirmed on any given departure. Exclusive Shore Events vary. Combinability with other promotions varies.